

# STUD TO STABLE

Perth Equine Hospital Newsletter  
Winter 2023



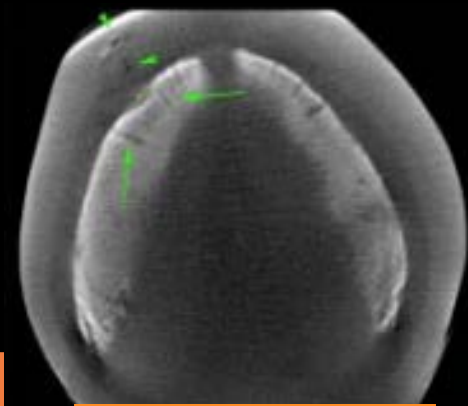
Welcome to our winter edition of Stud to Stable. It seems that winter has established itself this week and it's turned cold and wet. Whilst the urge to shelter inside and hibernate is strong, it is much better for all of us to get rugged up and head outside. Winter fresh air is good for everyone! Remember, winter allows us to amble along a trail with only the sounds of hoofbeats and wildlife. Bliss!

To ensure we serve the equine community, we have opened a small convenience store at Perth Equine reception. Here, you'll find a range of products including first-aid supplies and other equine staples. Pop in to pick up forgotten essentials or to update your equine emergency kit. Our range of bandages are hospital grade and competitively priced, ensuring a hassle-free bandaging experience. When it comes to first aid, don't skimp! Many cheap bandage brands don't stick or stay in place. They're often thin and flimsy and come off within a few minutes, leaving wounds exposed. Higher quality bandages breathe better, and flex and they also tend to hurt less when it's time to pull them off.

We hope you find our latest newsletter useful. As always if you have any questions, comments or suggestions, please let us know.

Warm wishes  
Paul O'Callaghan & PEH Team

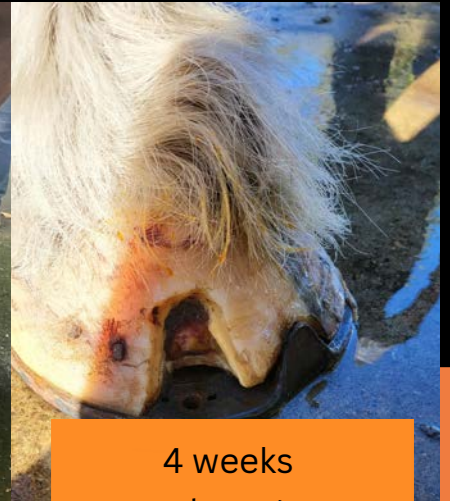
# HOW TO RECOGNISE & TREAT KERATOMAS



CT of a Keratoma



Keratoma surgery



4 weeks post surgery

A keratoma is a benign tumour of the inner layer of keratin-producing epidermal hoof wall cells that propagates inside a horse's foot. Usually, it develops underneath the coronet and grows down the foot with the normal hoof.

Deformity of the hoof or local pain may indicate a keratoma, but the most common sign is an abscess that fails to resolve or recurs after treatment. To be sure of the diagnosis, an x-ray examination is required. While x-rays can reveal the mass itself and any damage to the pedal bone, an MRI or CT scan will more clearly define the extent of the abnormal tissue.

The only way to treat a keratoma is surgical removal. Keratomas are benign tumors, they do not metastasize or spread to other parts of the body, but sometimes they recur at the same site, following incomplete surgical removal.

In the immediate postoperative period, wound dressings are applied and changed regularly to control bleeding and infection and the foot is fitted with a hospital plate. A hospital plate is an aluminium plate specifically made to fit over a specially made shoe and makes easier the management of the wound. A long healing time is unavoidable considering that the hoof wall grows only about  $\frac{1}{2}$  cm per month!



# EXTRACORPOREAL SHOCKWAVE THERAPY

Extracorporeal Shockwave Therapy (ESWT) is a procedure that uses very high energy, focused energy waves (pulses) to stimulate tissue turnover, new blood vessel formation and enhance healing. ESWT is usually used for the treatment of bone and ligament injuries.

Shock waves can help in tissue regeneration by causing “micro-trauma” which stimulates an increased rate of new blood vessel development and therefore allows better delivery of the elements required for healing. It has also been shown to potentially increase bone turnover as well as having a short to medium term analgesic (pain-killing) effect.

ESWT has been effective in treating high suspensory desmitis, sesamoiditis, navicular syndrome, back and sacroiliac pain and typically involves three treatments at two week intervals.





PERTH EQUINE  
HOSPITAL



**SHOP IN STORE**



**Come and pick-up some new  
FIRST AID Supplies**



**We are now selling:**

Animalintex Poultry, Bandages, Cotton Wool, Dressings,  
Swabs, Syringes, Needles,  
Cetrigen, Chlorhexidine, Dermaclens, Malaseb.....



# NEED HELP PAYING YOUR ACCOUNT? WHY NOT USE VETPAY!

## What is VetPay?

VetPay is specifically designed to help you pay for your veterinary expenses without the worry of high upfront costs. Get your horse the treatment needed immediately, and pay the costs over time with flexible payment options and competitive rates.

- Flexible fortnightly payments
- Pay only 20% of costs as a deposit upfront
- No delay to treatment
- Simple online application

## Want to pay by Vetpay?

Apply online at [Vetpay.com.au](http://Vetpay.com.au) prior to your appointment with us for fast and easy finance. It takes about 15 minutes!



**VetPay**  
keeping veterinary care *affordable*

Payment options for all  
your vet care needs

- Peace of mind 24/7
- Easy online process
- Flexible repayment options
- Pre approval within minutes
- Apply now in clinic or go to [vetpay.com.au](http://vetpay.com.au)

**SIGN UP TODAY**





**FREE**

# DIET EVALUATION

Ranvet pride itself on their extensive knowledge and high-quality product range. They aim to help you ensure your horse is receiving a nutritionally balanced diet to achieve optimal health and performance.

Ranvets diet evaluation form takes approximately 5-10 minutes to complete.

Once you have submitted your diet evaluation form, one of Ranvet's qualified nutritionists will contact you to confirm all of the details. They will then provide you with a comprehensive report on your current feeding regime and tailored recommendations to suit your horse.



**CLICK  
HERE**

to begin 



**Ranvet**

Trusted Performance Products

# GASTROSCOPE

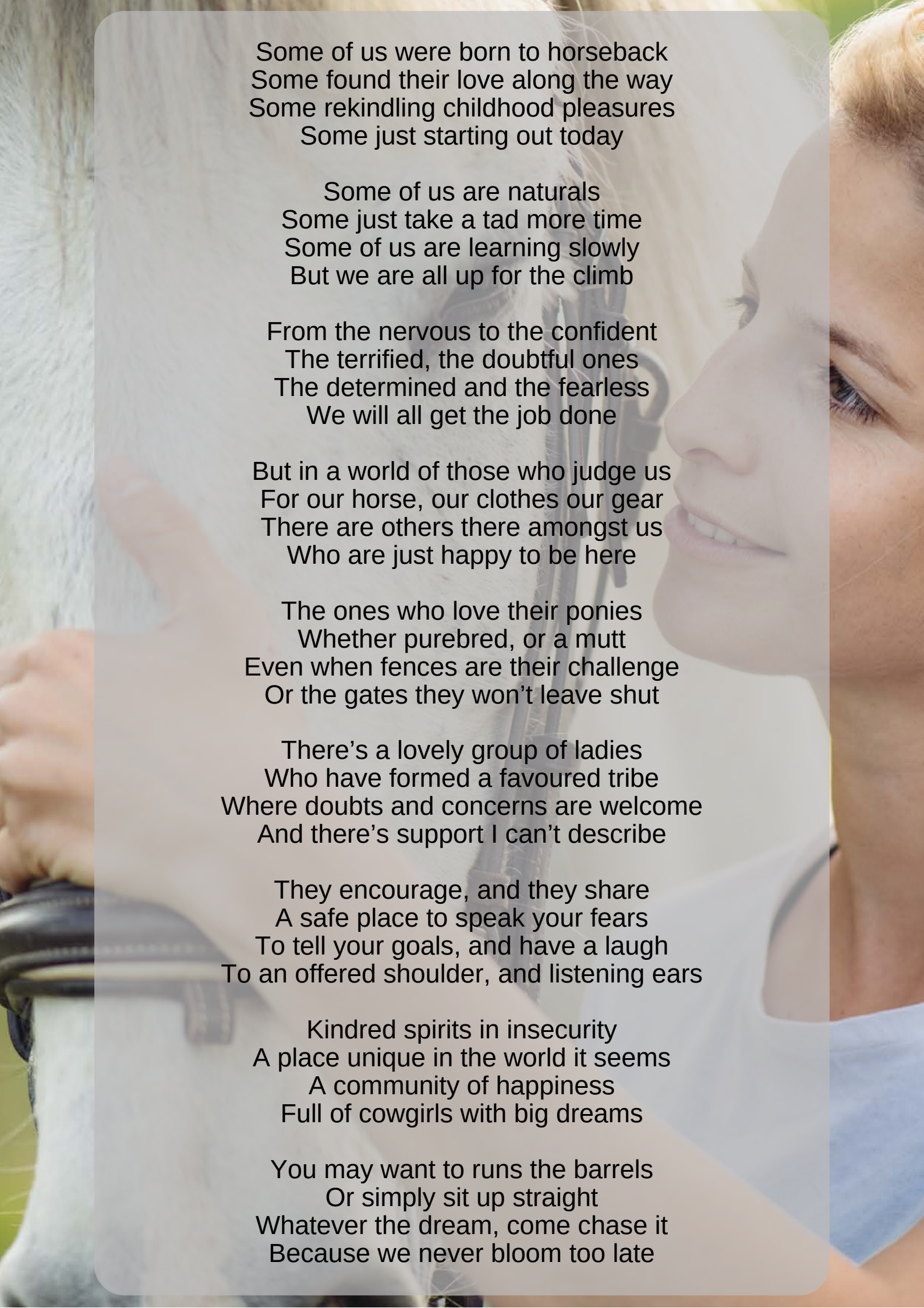
## QUICK

## TIPS

- All feed should be removed at least 12 hours before a gastroscopy.
- Withhold water 1-2 hours prior.
- When starving your horse it is advisable not to bed them on straw or anything that may be edible.
- Remember not to travel them to their appointment with a haynet, although bring one with you for after the procedure.

**\*\*If you do not think you can effectively fast your horse overnight, we can arrange to admit your horse to hospital the day before the procedure and fast him/her for you. A small charge applies for this service. \*\***



A woman with blonde hair is smiling and looking towards a white horse. The horse's head is on the left, and the woman's face is on the right. The background is a soft, out-of-focus green, suggesting an outdoor setting. The text is overlaid on a semi-transparent white rectangular area in the center of the image.

Some of us were born to horseback  
Some found their love along the way  
Some rekindling childhood pleasures  
Some just starting out today

Some of us are naturals  
Some just take a tad more time  
Some of us are learning slowly  
But we are all up for the climb

From the nervous to the confident  
The terrified, the doubtful ones  
The determined and the fearless  
We will all get the job done

But in a world of those who judge us  
For our horse, our clothes our gear  
There are others there amongst us  
Who are just happy to be here

The ones who love their ponies  
Whether purebred, or a mutt  
Even when fences are their challenge  
Or the gates they won't leave shut

There's a lovely group of ladies  
Who have formed a favoured tribe  
Where doubts and concerns are welcome  
And there's support I can't describe

They encourage, and they share  
A safe place to speak your fears  
To tell your goals, and have a laugh  
To an offered shoulder, and listening ears

Kindred spirits in insecurity  
A place unique in the world it seems  
A community of happiness  
Full of cowgirls with big dreams

You may want to runs the barrels  
Or simply sit up straight  
Whatever the dream, come chase it  
Because we never bloom too late



# Winter care tips for older horses



## 1. Have their teeth checked and floated

Ensure you get your horses teeth checked prior to the winter onslaught. One of the most important reasons for routine dental care is that a painful mouth results in ineffective chewing -> long fibre length -> decreased GI transit and colic.

## 2. Address any arthritis concerns

It's vital to keep arthritic horse's mobile, supplemented, and as flexible as possible during winter. The options to treat arthritis will be dependent on how many joints are affected, the severity of the condition, concurrent conditions, and budgetary restrictions. Supplements such as 4cyte, disease modifying osteoarthritis drugs such as pentosan, non-steroidal anti-inflammatory medication such as bute or firocoxib (prevequine) may be recommended.

## 3. Make exercise a priority

One of your most potent weapons for keeping joints moving well despite arthritis is exercise. Not only does even mild exercise “prime” their joints with fluid but it keeps the muscles and tendons that stabilize them strong. Active movement is essential not only to your horse’s health but their wellbeing too.

It is important to exercise an arthritic horse in scenarios that will promote longevity, rather than place him at undue risk of more joint pain.

\*\*Continued overleaf\*\*

# Winter care tips for older horses



## 4. Increase water intake

Adequate water consumption during the winter helps to better protect your horse from common winter ailments like impaction colic. The first step to avoid dehydration is to make sure water is always available, and that it's palatable to your horse. Horses prefer warmed water, just under body temperature, to cold water. An adult horse (500 kg) in a cool, comfortable environment that is not working, or lactating requires a minimum of 25 – 35 litres of fresh clean water per day. To stimulate thirst, electrolytes or salt licks can be given.

## 5. Hoof Care

As horses get older and are ridden less, they may develop poor hoof growth or imbalanced, uneven hooves. This becomes worse when they have arthritis and are not moving correctly. Ensure you get your horses hooves trimmed regularly to keep their feet in good condition.

## 6. Shelter & Warmth

Make sure the rugs you intend to use on your older horse still fit. Changes in their musculature can dramatically alter the fit of the rug leading to painful pressure sores. If the horse is blanketed continuously, you should remove the rug daily to check that no sores or skin conditions develop and to make sure he isn't overheating. Keep rugs dry, and do not rug a wet horse, wait until he is completely dry.

A senior horse should always have shelter from rain and wind and enough room to rest. Keep these areas dry, clean, and well-ventilated. Deep bedding with straw or old hay encourages older horses to lie down, rest and have an easier time during the cold weather season.



# Is it Dental Float Time?



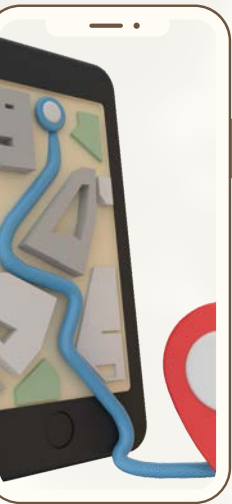
Monday to Friday



**\$145.00 \***

\*Price is for dental floating only.  
Sedation, Travel Costs & Extractions extra

Floating a horse's teeth fixes misalignment or sharp edges that have developed. Your horse will feel much better and many symptoms will subside. Although not every horse will need to be floated every year, each horse should still be checked.



## CLINIC REMINDERS

# Notices & Suggestions

### Do you have an emergency?

We are open 24/7 for emergencies. Simply dial 9479 1800 and your call will be directed to our veterinarian on call.

### Payment Terms

**Accounts are due for settlement at the end of consultation, the discharge of your horse and upon collection of drugs, prescriptions and over the counter sales.**

**We encourage you to discuss payment methods and fees before services are performed, so you can make financially responsible decisions about the care of your horse.**

For payment plans, we offer VetPay. If you plan on using this third-party service, please have an account set up prior to your consultation.

